

# Flute Mask Instructions

By Kerry Seip ([kseip@district70.org](mailto:kseip@district70.org))

The instructions attached are just my ideas to provide a mask for flute players. The goal is to keep as much moisture, breath, spit, etc. contained as possible and still provide enough room for air flow to produce a good flute sound. There is a hole (button hole) in the mask for the head joint to go through.



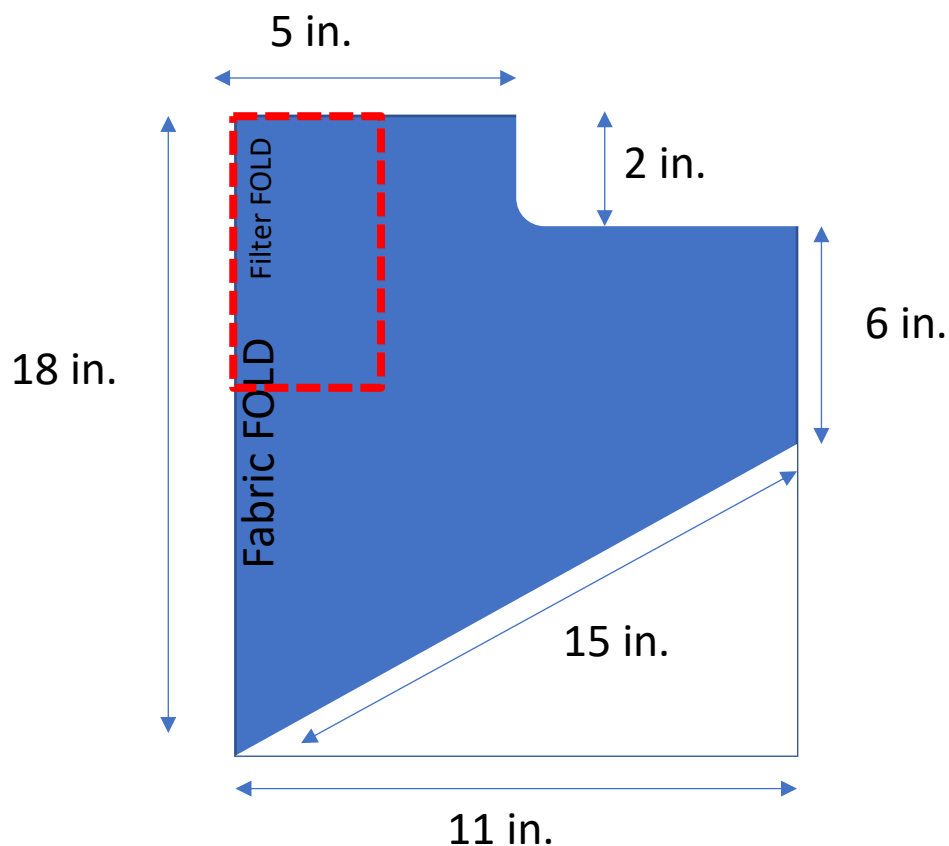
## Materials:

- Knit fabric:  $\frac{3}{4}$  - 1 yard (or any fabric with stretch) *\*1 yard will give you extra material*
- 4 inch long Pipe cleaner (for nose)
- Ear pieces: (personal choice for comfort)
  - 1/8 inch wide elastic (to go over ears)
    - Approx. 6 inches long but can adjust for size
  - 3/4 inch wide ribbon/bias tape (to tie around head)
    - Length depends on size
- Matching color thread for sewing

\*\*\*This mask does NOT include a filter. However, it could easily be sewn in. See note on next page for location

## INSTRUCTIONS:

- Create a pattern using these measurements. Paper is your choice (tissue paper works)  
*\*This pattern can be adjusted to fit. This was just what was used for the initial mask*



### ADD A FILTER:

If you wanted to add a filter, you could sew it at this location, also folding it over so it fully covers the nose and mouth.

Or a filter can be the full shape of the mask, like a liner inside the fabric.

*\*See red box on finished picture below\**

- Wash fabric prior to use/sewing
- Iron

- Fold fabric with right sides together
  - You want the clean/pretty/patterned/front/right side of the fabric showing on the fabric after sewing. Thus, you sew with the RIGHT SIDES together so the unfinished edges are inside the mask



- Fold the fabric in half with WRONG sides showing (right sides together)
- Pin pattern to fabric
  - REMEMBER to put LONG edge on the fold of the fabric

*\*I added the cutout for the ears after I made this pattern\**



- Cut around pattern



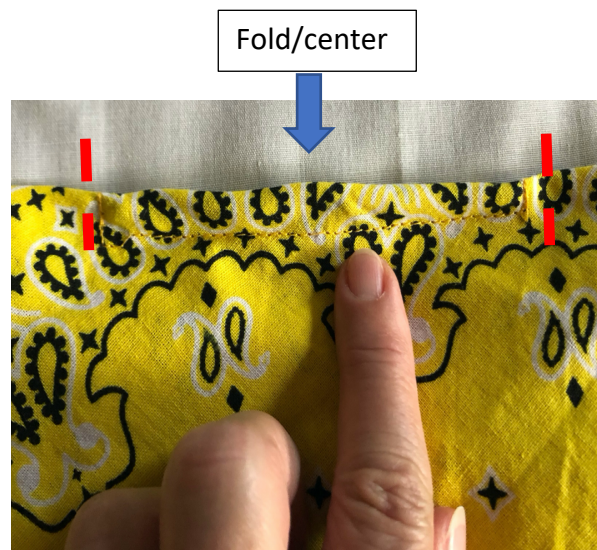
- Stitch together short side and finish the bottom edge. I used a  $\frac{3}{4}$  seam allowance



- Finish around the top edge
  - Include the pipe cleaner inside the finished edge at the top



\*Be sure to sew around the left/right edges of the pipe cleaner to secure it at the center of the fold.



- add ear pieces / ribbon to fit

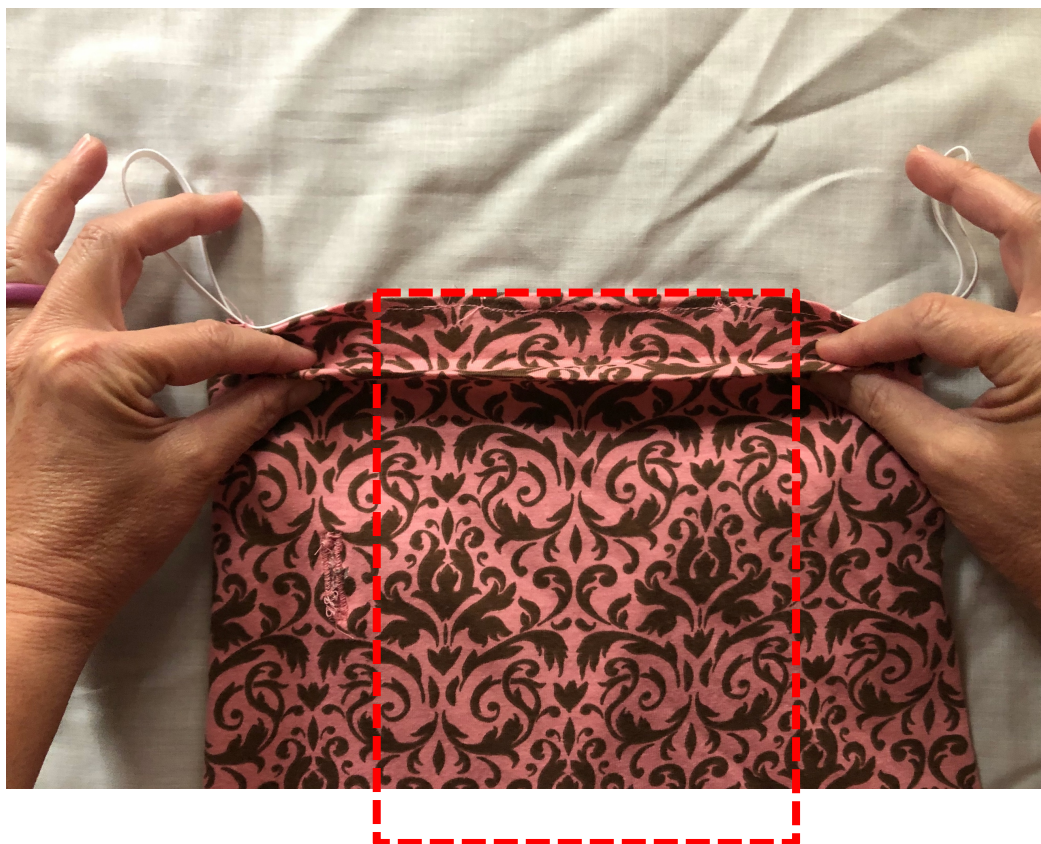


- Flip to RIGHT SIDE out and open the mask



- Create a “tuck” between the ear pieces.
  - I gathered the fabric to create an approx. 1 inch fold TOWARD you

\*Area where a filter could be sewn in. This would attach to the WRONG SIDE of the fabric



- Pull the tuck up to the ear pieces edge and sew in place
  - This will create a fold that will raise the edge of the fabric off the mouth to allow for more room for the air to “spin” off the lip plate



- I thought about this later \*\*For added stability and less fighting with the fold, you can sew the fold, at the center, to the top of the mask or maybe even all the way across.  
*(I have not tried this yet)*



- Open fabric to sew buttonhole. Most machines have a buttonhole feature.
  - Make sure to OPEN the fabric to create button stitch (*first time I stitched the mask together*)
  - This will need to be measured for flute position while wearing
  - This will be where the Head joint to fit through. I made a 1 inch button hole
    - You will want to make sure this is snug so as to reduce air escaping



- Ready to wear, easy to wash
- Sewing tip: PRESS all sewn edges with an iron. Helps them lay flat

**\*\*Every student would get their own mask and be responsible for washing and upkeep. Easy enough to wear all day if needed (in my opinion).**